

WAREHOUSING AND DISTRIBUTION IN HANNIBAL, MISSOURI

WHY HANNIBAL?

- ▶ **1-Day drive** (500 miles) to most Midwest markets.
- ▶ **Intersection of** I-72 and US-61 highways.
- ▶ **River port access** in addition to road, rail and air.



Transportation Assets that Support Robust Distribution Operations

In addition to the transportation assets described below, Northeast Missouri Workforce Development has established career pathways for transportation and logistics, with community colleges offering programs in logistics and trucking.

TRANSPORTATION AMENITIES

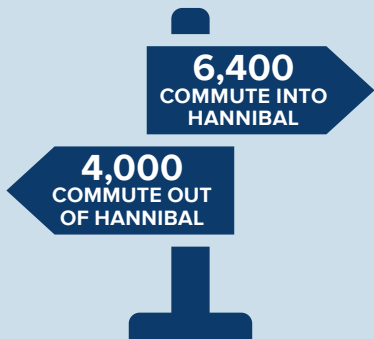
- ▶ Interstate 72, the *Chicago Kansas City Expressway*, (east/west) and U.S. 61, *Avenue of the Saints*, (north/south) intersect in Hannibal. Both are four-lane divided highways.
- ▶ The Hannibal Regional Airport (KHAE) accommodates executive jet travel with 4,400 x 100-foot concrete runway. Features and services include fuel, hangars, tiedowns, pilot and passenger lounges.
- ▶ The Mississippi river is Hannibal's eastern border and offers barge shipping. BASF operates a port which is currently underutilized.
- ▶ The Hannibal Regional Port Authority is actively engaged in site development in Hannibal.
- ▶ BNSF and Norfolk Southern service and access intermodal services in St. Louis and Kansas City.

Business Environment

SURROUNDING POPULATION



DAILY COMMUTING WORKFORCE



Wage Rates

SELECTED WAREHOUSING/DISTRIBUTION OCCUPATIONS

OCCUPATION	NORTHEAST REGION *
11-3071 Distribution manager	\$43.67
43-5011 Cargo and freight agent	\$20.84
43-5061 Production expediting clerk	\$20.12
53-3033 Light truck driver	\$16.14
53-7051 Industrial truck operator	\$19.00
53-7062 Material mover	\$13.50

Source: Bureau of Labor Statistics May 2019 Metropolitan and Nonmetropolitan Area Occupational Employment and Mean Wage Estimates for Northeast Region (North Missouri Nonmetropolitan Area).
*Hannibal is in Northeast Region.

Training Resources

MOBERLY AREA COMMUNITY COLLEGE

Five locations including Hannibal, 6,000 students, Associate and certificate options.

Engineering, IT, cybersecurity, manufacturing, food processing, ag tech, logistics, truck driving

JOHN WOOD COMMUNITY COLLEGE (JWCC)

In Quincy, IL (22 miles), 1,600 students, degree and trade certificate options.

Computers, engineering, manufacturing, logistics

HANNIBAL LAGRANGE UNIVERSITY

In Hannibal, 1,200 students, private four-year Christian university.

Engineering, computer info systems

CULVER-STOCKTON COLLEGE

In Canton, MO (40 miles), 975 students, private four-year Christian university.

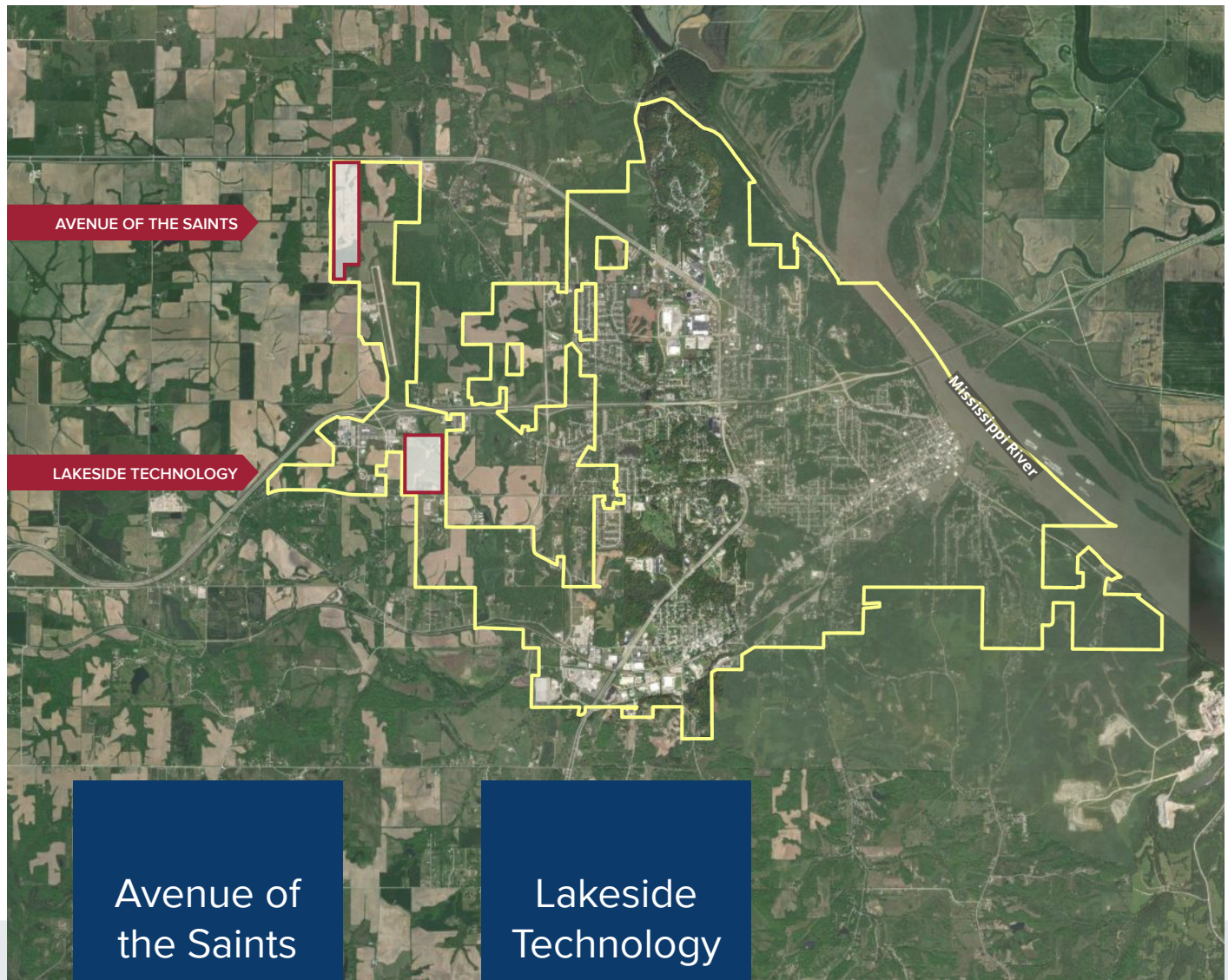
Chemistry, IT, Supply Chain Management, Business

HANNIBAL CAREER AND TECHNICAL CENTER

Public school program for middle and high school students. Technical and on-the-job training.

Welding, machine tools, CNC, automotive training

Best Business Parks for Warehousing/Distribution



Avenue of the Saints

CURRENT FEATURES

- ▶ 145 acres zoned industrial
- ▶ Adjacent to airport
- ▶ Proximity to rail and river access
- ▶ Fiber optics recently installed

BEST USES

- ▶ Distribution
- ▶ Manufacturing

Lakeside Technology

CURRENT FEATURES

- ▶ 80 acres zoned industrial, level
- ▶ Utilities at park perimeter
- ▶ A Missouri Certified Site
- ▶ No rail

BEST USES

- ▶ Technology
- ▶ Higher-end Manufacturing
- ▶ Medical Manufacturing
- ▶ Small Distribution
- ▶ Food Processing



Lakeside Roundabout

Road, Rail, River and Air



ROAD

- ▶ 4-lane highway systems: combined 40,000 vehicles through Hannibal daily
- ▶ Chicago-Kansas City Expressway (I-72)
- ▶ Avenue of the Saints (US-61)



RAIL

- ▶ BNSF & NS access to local businesses
- ▶ Connectivity to intermodal services in St. Louis and Kansas City (2nd and 3rd largest railroad terminals in the U.S.)



RIVER

- ▶ Mississippi River at city's edge
- ▶ Public Port
- ▶ Barge shipping opportunities
- ▶ Process water capabilities nearly unlimited



AIR

- ▶ Executive jet: (fuel, hangars, tiedowns, lounges): Hannibal Regional Airport (KHAE)
- ▶ Commercial service 30 minutes (Quincy)
- ▶ International service 90 minutes (St. Louis)



DISTANCE (MILES)

ST. LOUIS	117
KANSAS CITY	212
DES MOINES	230
CHICAGO	300
INDIANAPOLIS	311
OMAHA	325
MILWAUKEE	377
LOUISVILLE	379
FT. WAYNE	390
MEMPHIS	392
WICHITA	409
TULSA	419
CINCINNATI	420
NASHVILLE	428
MINNEAPOLIS	445
COLUMBUS	482
OKLAHOMA CITY	521
DETROIT	554