

# MANUFACTURING AND TECHNICAL SERVICES IN HANNIBAL, MISSOURI

## WHY HANNIBAL?

- ▶ **1-Day access** to Midwest markets.
- ▶ **106,000-strong labor force** within a 45-minute commute.
- ▶ **Three industrial/business parks** suitable for small, mid-sized, and large manufacturing operations.



## Efficient and Sustainable Operating Environment

Located along the Mississippi River, close to markets and suppliers in more than eight states, Hannibal offers manufacturers a business-friendly environment with low barriers to entry. Local employees, known for their work ethic, are supported by workforce training and educational programs focused on career pathways for advanced manufacturing.

## Join these Regional Manufacturers

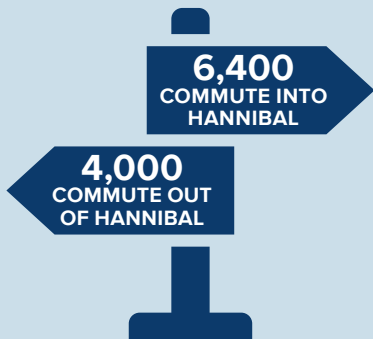


# Business Environment

## SURROUNDING POPULATION



## DAILY COMMUTING WORKFORCE



## Wage Rates

### SELECTED MANUFACTURING AND TECHNICAL SERVICES OCCUPATIONS

OCCUPATION	NORTHEAST REGION *
15-1244 Computer system admin	\$33.69
15-1231 Computer network specialist	\$21.40
17-2112 Industrial engineer	\$36.38
49-9041 Industrial machinery mechanic	\$23.02
51-4041 Machinist	\$20.96
51-4121 Welder	\$17.80
51-9198 Production worker	\$15.82

Source: Bureau of Labor Statistics May 2019 Metropolitan and Nonmetropolitan Area Occupational Employment and Mean Wage Estimates for Northeast Region (North Missouri Nonmetropolitan Area).  
\*Hannibal is in Northeast Region.

## Training Resources

### MOBERLY AREA COMMUNITY COLLEGE

Five locations including Hannibal, 6,000 students, Associate and certificate options.

*Engineering, IT, cybersecurity, manufacturing, food processing, ag tech, logistics, truck driving*

### JOHN WOOD COMMUNITY COLLEGE (JWCC)

In Quincy, IL (22 miles), 1,600 students, degree and trade certificate options.

*Computers, engineering, manufacturing, logistics*

### HANNIBAL LAGRANGE UNIVERSITY

In Hannibal, 1,200 students, private four-year Christian university.

*Engineering, computer info systems*

### CULVER-STOCKTON COLLEGE

In Canton, MO (40 miles), 975 students, private four-year Christian university.

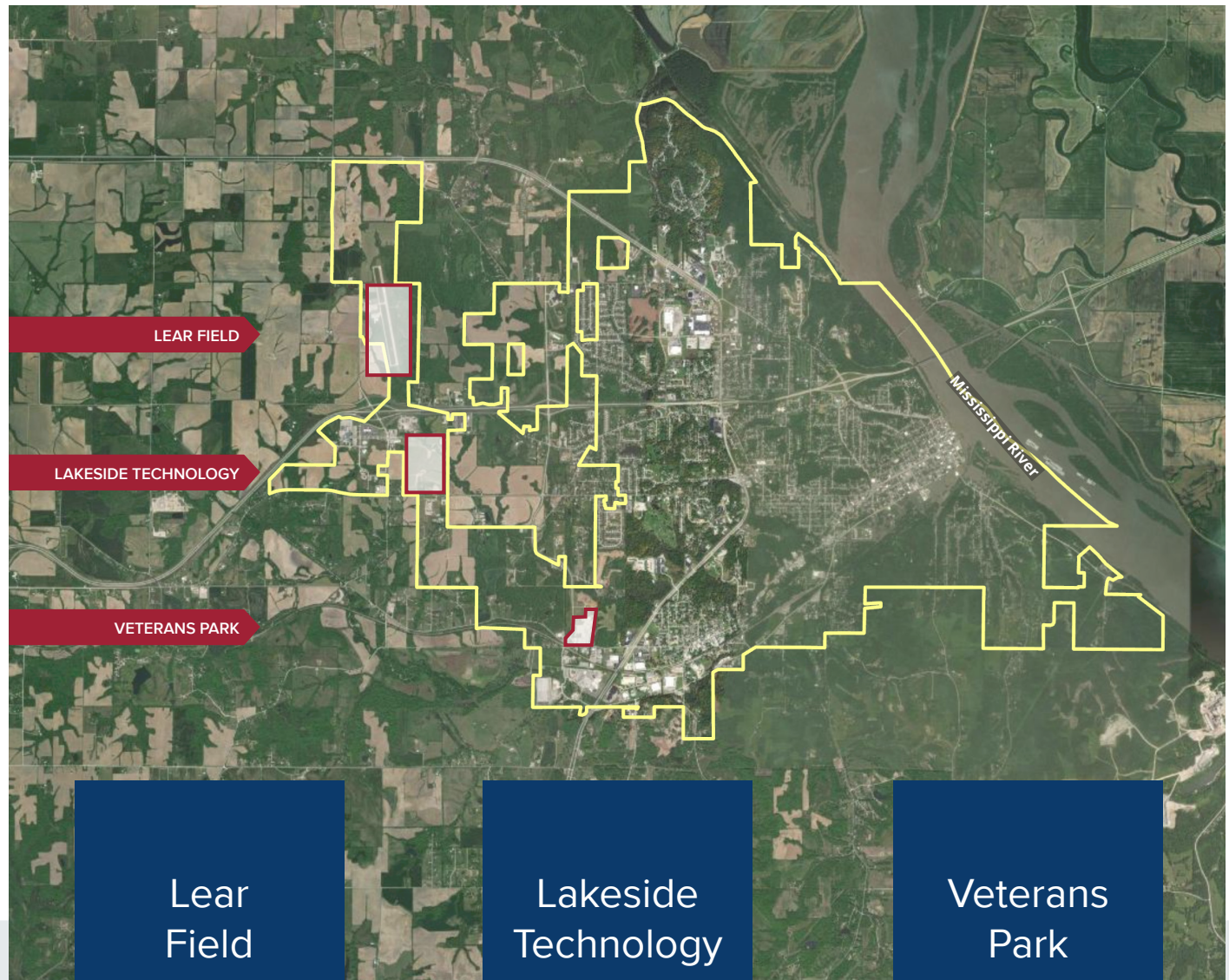
*Chemistry, IT, Supply Chain Management, Business*

### HANNIBAL CAREER AND TECHNICAL CENTER

Public school program for middle and high school students. Technical and on-the-job training.

*Welding, machine tools, CNC, automotive training*

# Best Business Parks for Manufacturers



## Lear Field

### CURRENT FEATURES

- ▶ Flight Training
- ▶ Ample opportunities for development, both aviation and non-aviation

### BEST USES

- ▶ Aviation related operations and services
- ▶ Non-Aviation related uses
- ▶ Manufacturing

## Lakeside Technology

### CURRENT FEATURES

- ▶ 80 acres zoned industrial, level
- ▶ Utilities at park perimeter
- ▶ A Missouri Certified Site
- ▶ No rail

### BEST USES

- ▶ Technology
- ▶ Higher-end Manufacturing
- ▶ Medical Manufacturing
- ▶ Small Distribution
- ▶ Food Processing

## Veterans Park

### CURRENT FEATURES

- ▶ 25 acres, level
- ▶ Electric, gas, water, sewer on site

### BEST USES

- ▶ Smaller Manufacturing
- ▶ Food Processing



# Road, Rail, River and Air



## ROAD

- ▶ 4-lane highway systems: combined 40,000 vehicles through Hannibal daily
- ▶ Chicago-Kansas City Expressway (I-72)
- ▶ Avenue of the Saints (US-61)



## RAIL

- ▶ BNSF & NS access to local businesses
- ▶ Connectivity to intermodal services in St. Louis and Kansas City (2nd and 3rd largest railroad terminals in the U.S.)



## RIVER

- ▶ Mississippi River at city's edge
- ▶ Public Port
- ▶ Barge shipping opportunities
- ▶ Process water capabilities nearly unlimited



## AIR

- ▶ Executive jet: (fuel, hangars, tiedowns, lounges): Hannibal Regional Airport (KHAE)
- ▶ Commercial service 30 minutes (Quincy)
- ▶ International service 90 minutes (St. Louis)



## DISTANCE (MILES)

ST. LOUIS	117
KANSAS CITY	212
DES MOINES	230
CHICAGO	300
INDIANAPOLIS	311
OMAHA	325
MILWAUKEE	377
LOUISVILLE	379
FT. WAYNE	390
MEMPHIS	392
WICHITA	409
TULSA	419
CINCINNATI	420
NASHVILLE	428
MINNEAPOLIS	445
COLUMBUS	482
OKLAHOMA CITY	521
DETROIT	554